



**Upper**  
Blossom HPB08

**Middle**  
Cedar HPC08

**Lower**  
Aspen HPA08 and Linden HPL08

## Product information

The Halcyon Collection - fresh and innovative performance fabrics, engineered for end-use areas which require extra protection. All bleach cleanable and environmentally conscious too.

Powered by Camira TriOnyx – a soft-effect finish which ensures fabrics are: 1) stain repellent and waterproof, 2) permanently antimicrobial using Maedical, and 3) flame retardant to the highest European standards.

**TriOnyx** **maedical**  
I-LINK



## Technical information

### UK

**Composition**  
100% Polyester face with TriOnyx performance backcoat.

**Width**  
140cm minimum

**Weight**  
Aspen/Blossom: 405g/m<sup>2</sup> ±5% (565g/lin.m ±5%)  
Cedar: 465g/m<sup>2</sup> ±5% (650g/lin.m ±5%)  
Linden: 425g/m<sup>2</sup> ±5% (595g/lin.m ±5%)  
Poplar: 490g/m<sup>2</sup> ±5% (685g/lin.m ±5%)

**Pattern Repeat**  
Aspen: Width 4cm, Length 3.8cm  
Blossom: Width 40cm, Length 34.5cm

**Abrasion Resistance**  
Linden: 100,000 Martindale Tours  
Aspen/Blossom: 50,000 Martindale cycles  
Cedar/ Poplar: 60,000 Martindale cycles  
5 year guarantee (full details available)

**Flammability**  
BS EN 1021 - 1:2014 (cigarette)  
BS EN 1021 - 2:2014 (match)  
BS 5852:2006 Section 4 Ignition Source 5  
BS 7176:2007 Medium Hazard  
UNI 9175 Class 1M  
Additional:  
Aspen /Blossom: DIN 4102 B1  
Cedar/Poplar/ Linden: DIN 4102 B2

**Light Fastness**  
6 (ISO 105 - B02:2014)

**Fastness to Rubbing**  
Wet: 4, Dry: 4 (ISO 105 - X12:2002)

**Waterproof**  
Hydrostatic head BS 3424 > 1 metre

**Urea Resistance**  
BS 3424 Part 19 no significant deterioration after 24 hrs

**Anti-microbial / Anti-fungal**  
AATCC 147:2011

**Bleach Cleanable**  
BS EN ISO E03 colour change 4 for 10% chlorine solution.

**Cleaning**  
Vacuum regularly. Wipe with a damp cloth or use proprietary upholstery shampoo. For full details see cleaning guide.

Please note that seam performance is dependent on seam construction and needle and thread type. We recommend that appropriate sewing advice be taken.

**Note:** Batch to batch variations in shade may occur within commercial tolerances. We reserve the right to alter technical specifications without notice. The Unregistered Design Rights and the Copyright in all designs are the exclusive property of Camira Fabrics Limited.

### D

**Zusammensetzung**  
Obermaterial 100 % Polyester mit TriOnyx Rückenbeschichtung

**Breite**  
140cm nutzbare Breite

**Gewicht**  
Aspen/Blossom: 405g/m<sup>2</sup> ±5% (565g/lfm ±5%)  
Cedar: 465g/m<sup>2</sup> ±5% (650g/lfm ±5%)  
Linden: 425g/m<sup>2</sup> ±5% (595g/lfm ±5%)  
Poplar: 490g/m<sup>2</sup> ±5% (685g/lfm ±5%)

**Rapport**  
Aspen: Breite 4cm, Länge 3,8cm  
Blossom: Breite 40cm, Länge 34,5cm

**Scheuerfestigkeit**  
Linden: 100.000 Martindale Tours  
Aspen/Blossom: 50.000 Martindale  
Cedar/ Poplar: 60.000 Martindale  
5 Jahre Garantie (Details auf Anfrage)

**Feuersicherung**  
BS EN 1021 - 1:2014 (Zigarettestest)  
BS EN 1021 - 2:2014 (Reichholzttest)  
BS 5852:2006 Section 4 Ignition Source 5  
BS 7176:2007 Medium Hazard  
UNI 9175 Class 1M  
Weiteres:  
Aspen /Blossom: DIN 4102 B1  
Cedar/Poplar/ Linden: DIN 4102 B2

**Lichtechtheit**  
6 (ISO 105 - B02:2014)

**Reibechtheit**  
Nass: 4, Trocken: 4 (ISO 105 - X12:2002)

**Wasserdicht bis zu einer**  
Wassersäule BS 3424 > 1 Metre

**Urin-Beständig**  
BS3424 Teil 19, keine erkennbare Verschlechterung nach 24 Stunden

**Anti-mikrobiell / Anti-Schimmel**  
AATCC 147:2011

**Chlorbleiche-Beständig**  
BS EN ISO E03 Farbänderung 4 bei 10%-iger Chlorbleiche.

**Reinigung**  
Regelmässig absaugen. Mit einem feuchten Tuch abwischen oder mit einem Marken-Polstershampoo shampooieren. Details auf Anfrage.

Eine optimale Nahtaureissfestigkeit hängt von der Nahtfahne, der verwendeten Nadel und dem Näh-Garn ab. Wir empfehlen daher Nähveruche durchzuführen.

**Wichtig:** Handelsübliche Farbabweichungen können auftreten und berechtigen nicht zur Reklamation. Wir behalten uns die Änderung technischer Spezifikationen vor. Die registrierten und nicht registrierten Urheberrechte der Designierungen sind ausschliessliches Eigentum der Camira Fabrics Limited.

### F

**Composition**  
100% polyester contrecolle avec un TriOnyx coating haute performance.

**Largeur**  
140cm minimum

**Poids**  
Aspen/Blossom: 405g/m<sup>2</sup> ±5% (565g/lin.m ±5%)  
Cedar: 465g/m<sup>2</sup> ±5% (650g/lin.m ±5%)  
Linden: 425g/m<sup>2</sup> ±5% (595g/lin.m ±5%)  
Poplar: 490g/m<sup>2</sup> ±5% (685g/lin.m ±5%)

**Répétition du motif**  
Aspen: Largeur 4cm, Longueur 3,8cm  
Blossom: Largeur 40cm, Longueur 34,5cm

**Résistance à l'abrasion**  
Linden: 100.000 Martindale Tours  
Aspen/Blossom: 50.000 cycles Martindale  
Cedar/ Poplar: 60.000 cycles Martindale  
Garantie de 5 ans (renseignements complémentaires disponibles)

**Flammabilité**  
BS EN 1021 - 1:2014 (cigarette)  
BS EN 1021 - 2:2014 (allumette)  
BS 5852:2006 Section 4 Ignition Source 5  
BS 7176:2007 Medium Hazard  
UNI 9175 Class 1M  
Additional:  
Aspen /Blossom: DIN 4102 B1  
Cedar/Poplar/ Linden: DIN 4102 B2

**Solidité à la lumière**  
6 (ISO 105 - B02:2014)

**Solidité au Frottement**  
Mouillé: 4, Sec: 4 (ISO 105 - X12:2002)

**Imperméabilité**  
Pression hydrostatique selon la norme BS3424 > 1 mètre

**Résistance à l'urée**  
Pas de détérioration significative après 24h selon la norme BS3424 partie 19

**Anti-microbioal / Anti-fungal**  
AATCC 147:2011

**Nettoyable au Javel**  
BS EN ISO E03 Résistance 4 dans une solution de chlore 10%.

**Nettoyage**  
Aspirer régulièrement. Essuyer avec un tissu humide ou shampooiner en utilisant un shampoing approprié à ce type de revêtements. Veuillez trouver tous les détails dans le manuel de nettoyage.

Veuillez noter que la performance du joint dépend de sa construction ainsi que de l'aiguille et du type de fil utilisés. Nous recommandons de suivre les conseils générales de couture.

**Remarque:** une variation de couleurs peut provenir (commerciallement tolérable). Nous réservons le droit de changer les spécifications techniques sans préavis. Les Droits de Conception non-enregistrés et les droits d'auteur de tous les motifs sont la propriété exclusive de Camira Fabrics Limited.

### ES

**Composición**  
Superficie 100% Poliester ignífugo base con TriOnyx sellado

**Ancho**  
140cm mínimo

**Peso**  
Aspen/Blossom: 405g/m<sup>2</sup> ±5% (565g/lin.m ±5%)  
Cedar: 465g/m<sup>2</sup> ±5% (650g/lin.m ±5%)  
Linden: 425g/m<sup>2</sup> ±5% (595g/lin.m ±5%)  
Poplar: 490g/m<sup>2</sup> ±5% (685g/lin.m ±5%)

**Repetición en el diseño**  
Aspen: Ancho 4cm, Largo 3,8cm  
Blossom: Ancho 40cm, Largo 34,5cm

**Resistencia a la abrasión**  
Linden: 100.000 Martindale Tours  
Aspen/Blossom: 50.000 cycles Martindale  
Cedar/ Poplar: 60.000 Martindale Tours  
Garantía de uso 5 años (más información disponible bajo consulta)

**Infiamabilidad**  
BS EN 1021 - 1:2014 (cigarrillo)  
BS EN 1021 - 2:2014 (cerilla)  
BS 5852:2006 Section 4 Ignition Source 5  
BS 7176:2007 Medium Hazard  
UNI 9175 Class 1M  
Additional:  
Aspen /Blossom: DIN 4102 B1  
Cedar/Poplar/ Linden: DIN 4102 B2

**Solidez a la luz**  
6 (ISO 105 - B02:2014)

**Solidez al rozamiento**  
Húmedo: 4, Seco: 4 (ISO 105 - X12:2002)

**Resistente al Agua**  
Base Hidrostática BS 3424 > 1 metro

**Resistencia a la Urea**  
BS 3424 Parte 19: deterioro insignificante tras 24 horas

**Anti-microbioal / Anti-fungal**  
AATCC 147:2011

**Posibilidad lavado con Lejía**  
BS EN ISO E03 Resistencia 4 en una solución de cloro 10%.

**Limpeza**  
Limpiar con aspirador con regularidad. Limpiar en seco, o bien lavar con un paño húmedo, o con un jabón especial para tapicerías. Por todos los detalles vea el manual de limpieza.

Tenga en cuenta que el rendimiento de la costura depende de la construcción de la costura, además de la aguja y del tipo de rosca. Le recomendamos que se aconsejen para coser la costura.

**Note:** las variaciones de lote a lote en la sombra se puede producir dentro de tolerancias comerciales. Nos reservamos el derecho a efectuar modificaciones técnicas sin previo aviso. Los derechos sobre los diseños no registrados y los derechos de autor en todos los diseños son propiedad exclusiva de Camira Fabrics Limited.

# camira

style with substance

www.camirafabrics.com

# The Halcyon Collection

Aspen / Blossom / Cedar / Linden / Poplar



Task seating



Soft seating



Medium Hazard



Anti-Microbial



Stain repellent



Waterproof



Year guarantee

## The Halcyon Collection

**The Halcyon Collection**

www.camirafabrics.com

**Note:**  
Photographic fabric scans are not colour accurate. Always request actual fabric samples before ordering.



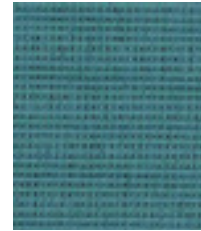
**Blossom**  
Lake HPC09



**Linden**  
Lake HPL09



**Aspen**  
Lake HPA09



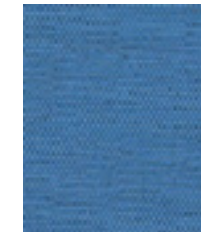
**Cedar**  
Lake HPC09



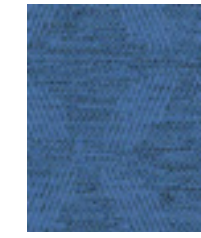
**Poplar**  
Lake HPP09



**Blossom**  
Dewdrop HPC05



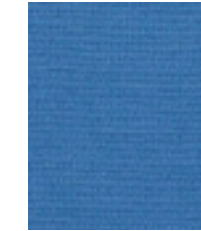
**Linden**  
Dewdrop HPL05



**Aspen**  
Dewdrop HPA05



**Cedar**  
Dewdrop HPC05



**Poplar**  
Dewdrop HPP05



**Blossom**  
Lavender HPC02



**Linden**  
Lavender HPL02



**Aspen**  
Lavender HPA02



**Cedar**  
Lavender HPC02



**Poplar**  
Lavender HPP02



**Blossom**  
Almond HPC10



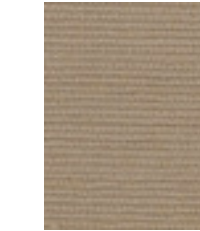
**Linden**  
Almond HPL10



**Aspen**  
Almond HPA10



**Cedar**  
Almond HPC10



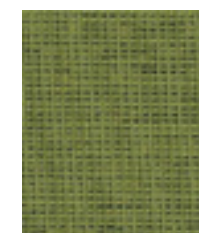
**Poplar**  
Almond HPP10



**Linden**  
Evergreen HPL08



**Blossom**  
Evergreen HPC08



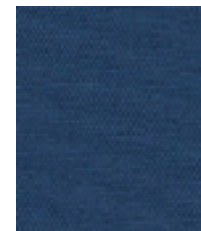
**Cedar**  
Evergreen HPC08



**Poplar**  
Evergreen HPP08



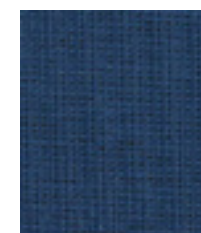
**Aspen**  
Evergreen HPA08



**Linden**  
Brook HPL04



**Blossom**  
Brook HPC04



**Cedar**  
Brook HPC04



**Poplar**  
Brook HPP04



**Aspen**  
Brook HPA04



**Linden**  
Berry HPL03



**Blossom**  
Berry HPC03



**Cedar**  
Berry HPC03



**Poplar**  
Berry HPP03



**Aspen**  
Berry HPA03



**Linden**  
Nutmeg HPL12



**Blossom**  
Nutmeg HPC12



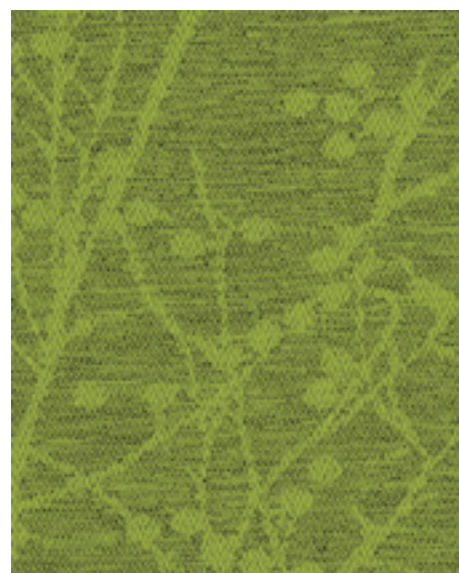
**Cedar**  
Nutmeg HPC12



**Poplar**  
Nutmeg HPP12



**Aspen**  
Nutmeg HPA12



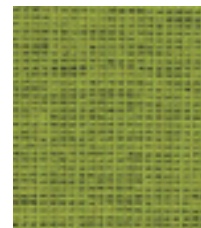
**Blossom**  
Gooseberry HPC07



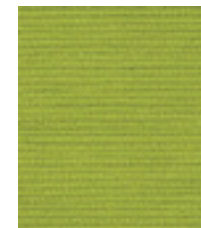
**Linden**  
Gooseberry HPL07



**Aspen**  
Gooseberry HPA07



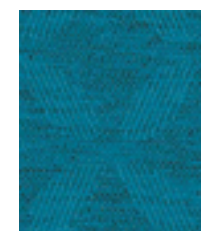
**Cedar**  
Gooseberry HPC07



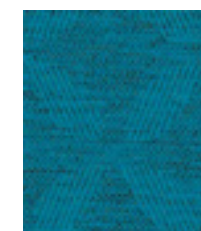
**Poplar**  
Gooseberry HPP07



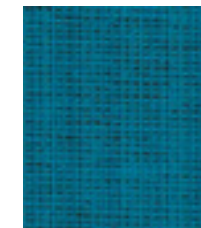
**Blossom**  
Botanic HPC06



**Linden**  
Botanic HPL06



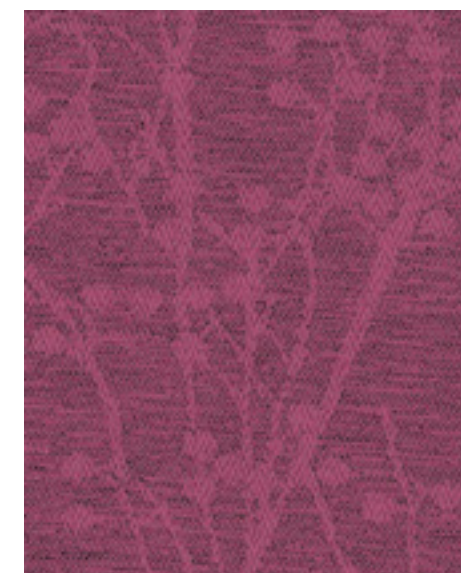
**Aspen**  
Botanic HPA06



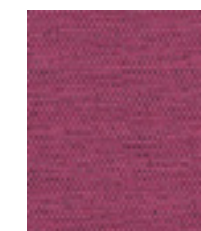
**Cedar**  
Botanic HPC06



**Poplar**  
Botanic HPP06



**Blossom**  
Petal HPC01



**Linden**  
Petal HPL01



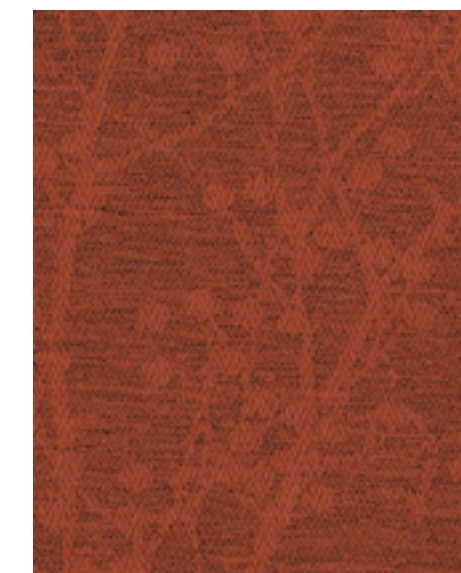
**Aspen**  
Petal HPA01



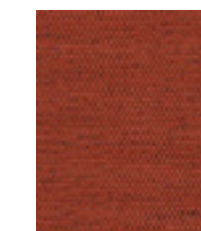
**Cedar**  
Petal HPC01



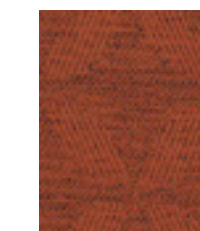
**Poplar**  
Petal HPP01



**Blossom**  
Tiger-Lily HPC11



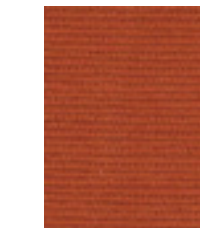
**Linden**  
Tiger-Lily HPL11



**Aspen**  
Tiger-Lily HPA11



**Cedar**  
Tiger-Lily HPC11



**Poplar**  
Tiger-Lily HPP11